



## SMD Shielded High Current Inductors - SDC3D16HP SERIES

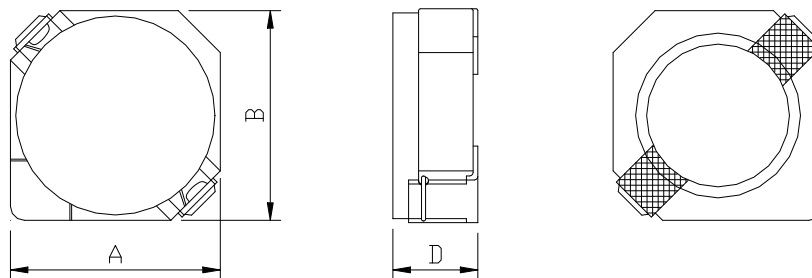


### PART NUMBERING SYSTEM

<b>SDC</b>	<b>3D16HP</b>	—	<b>330N</b>	—	<b>LF</b>
TYPE	DIMENSIONS		INDUCTANCE		LEAD FREE

### SHAPES AND DIMENSIONS

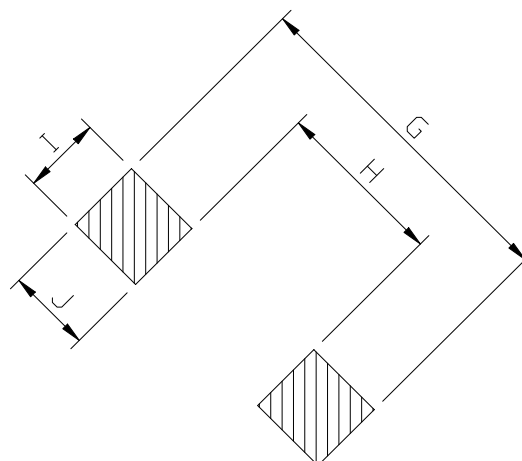
UNIT : mm



A=4.00 max. B=4.00 max. D=1.8 max.

### RECOMMENDED PATTERNS

UNIT : mm



G= 5.2 H= 2.4 I= 1.5 J= 1.4

## SMD Shielded High Current Inductors - SDC3D16HP SERIES

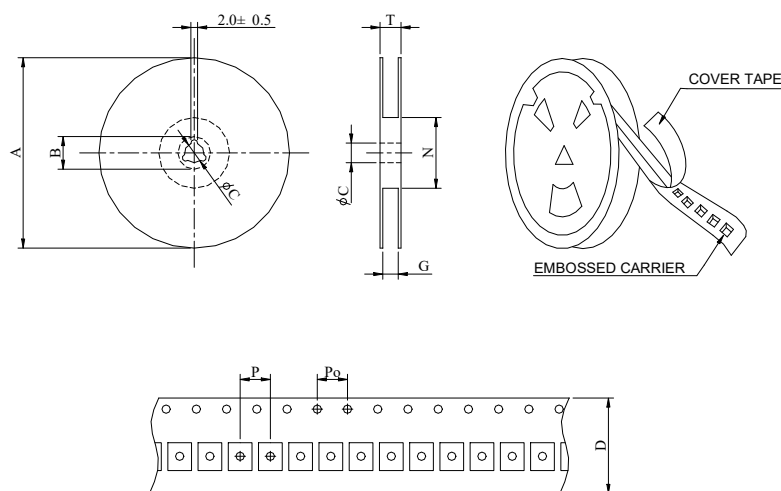


### SPECIFICATION TABLE

PART NUMBER	INDUCTANCE ( $\mu$ H)	DCR (m $\Omega$ ) (Max.)	Isat (A) ( Max. )	Irms (A) ( Max. )	TEST FREQ. ( Freq.)
SDC3D16HP-1R7N-LF	1.7 $\pm$ 30%	51	2.00	2.40	100KHz
SDC3D16HP-2R2N-LF	2.2 $\pm$ 30%	59	1.75	2.30	100KHz
SDC3D16HP-3R3N-LF	3.3 $\pm$ 30%	85	1.40	1.80	100KHz
SDC3D16HP-4R7N-LF	4.7 $\pm$ 30%	116	1.20	1.50	100KHz
SDC3D16HP-6R8N-LF	6.8 $\pm$ 30%	180	1.00	1.10	100KHz
SDC3D16HP-100M-LF	10 $\pm$ 30%	230	0.84	1.00	100KHz
SDC3D16HP-150M-LF	15 $\pm$ 30%	410	0.65	0.75	100KHz
SDC3D16HP-220M-LF	22 $\pm$ 30%	610	0.55	0.52	100KHz
SDC3D16HP-330M-LF	33 $\pm$ 30%	870	0.46	0.41	100KHz

- Isat : DC current at which the inductance drops 35% (typ) from its value without current.
- Irms: The actual current when temperature of coil becomes  $\Delta 40^{\circ}\text{C}$ . (  $T_a = +25^{\circ}\text{C}$  )
- Operating temperature range  $-40^{\circ}\text{C}$  to  $+125^{\circ}\text{C}$ , Electrical specifications at  $25^{\circ}\text{C}$ .

### PACKAGING SPECIFICATION



SERIES	STAYLE	Q' TY (PCS)	DIMENSIONS (m/m)								
			A	B $\pm 0.8$	C $\pm 0.5$	D	G <sup>+</sup>	N <sup>0</sup>	P	Po	T
SDC3D16HP	13-16	2000	330	21	13	16	18	50	8	4	22.4